

BD INSYTE™ AUTOGUARD™ BC

WITH BLOOD CONTROL TECHNOLOGY



Helping all people
live healthy lives

Making safety saferSM





If I can get the first stick,
everything else will follow.

Reduces Needlestick Injuries

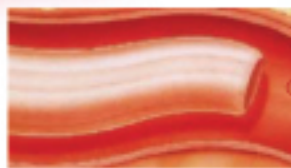
BD Autoguard shielded IV catheters mean added safety for you. The BD Autoguard push-button needle shielding technology was proven to effectively safeguard healthcare workers, with a 95% reduction in needlestick injuries.⁶

Protection Is In Your Control

Push-button needle protection gives clinicians more flexibility with the catheter, providing control of when to activate the safety mechanism. According to a clinical study, this push-button needle shielding technology has significantly reduced needlestick injuries to healthcare workers.⁶



BD Vialon™ Biomaterial
Conforms to the shape of the vessel.



BD Instaflash™ Needle Technology
Designed to reduce hit-and-miss insertion.





BD Autoguard™ Shielded IV Catheters for the ER, OR, and Labor & Delivery



>>>

BD Insite™ Autoguard™ Shielded IV Catheter with BD Vialon™ Biomaterial

Catalog # Non-Winged	Catalog # Winged	Gauge	Length	Flow Rate	O.D.	I.D.
381412	381512	24	0.75" (0.7 mm x 19 mm)	20 mL/min	.0260 - .0290	.0190 - .0220
381423	381523	22	1.00" (0.9 mm x 25 mm)	35 mL/min	.0330 - .0360	.0240 - .0270
381433	381533	20	1.00" (1.1 mm x 25 mm)	65 mL/min	.0410 - .0440	.0300 - .0330
381434	381534	20	1.16" (1.1 mm x 30 mm)	60 mL/min	.0410 - .0440	.0300 - .0330
381437	381537	20	1.88" (1.1 mm x 48 mm)	55 mL/min	.0410 - .0440	.0300 - .0330
381444	381544	18	1.16" (1.3 mm x 30 mm)	105 mL/min	.0500 - .0530	.0370 - .0400
381447	381547	18	1.88" (1.3 mm x 48 mm)	95 mL/min	.0500 - .0530	.0370 - .0400
381454	381554	16	1.16" (1.7 mm x 30 mm)	220 mL/min	.0670 - .0700	.0520 - .0550
381457	381557	16	1.77" (1.7 mm x 45 mm)	205 mL/min	.0670 - .0700	.0520 - .0550
381467	N/A	14	1.75" (2.1 mm x 45 mm)	330 mL/min	.0830 - .0860	.0665 - .0705

(Shipping case contains 200 units – 4 boxes of 50.)



>>>

BD Angiocath™ Autoguard™ Shielded IV Catheter with FEP Polymer

Catalog # Non-Winged	Gauge	Length	Flow Rate	O.D.	I.D.
381700	24	0.75" (0.7 mm x 19 mm)	20 mL/min	.0260 - .0290	.0190 - .0220
381701	22	1.00" (0.9 mm x 25 mm)	35 mL/min	.0330 - .0360	.0240 - .0270
381702	20	1.00" (1.1 mm x 25 mm)	65 mL/min	.0410 - .0440	.0300 - .0330
381703	20	1.16" (1.1 mm x 30 mm)	60 mL/min	.0410 - .0440	.0300 - .0330
381704	20	1.88" (1.1 mm x 48 mm)	55 mL/min	.0410 - .0440	.0300 - .0330
381705	18	1.16" (1.3 mm x 30 mm)	105 mL/min	.0500 - .0530	.0370 - .0400
381706	18	1.88" (1.3 mm x 48 mm)	95 mL/min	.0500 - .0530	.0370 - .0400
381707	16	1.16" (1.7 mm x 30 mm)	220 mL/min	.0670 - .0700	.0520 - .0550
381708	16	1.77" (1.7 mm x 45 mm)	205 mL/min	.0670 - .0700	.0520 - .0550
381709	14	1.75" (2.1 mm x 45 mm)	330 mL/min	.0830 - .0860	.0665 - .0705

(Shipping case contains 200 units – 4 boxes of 50.)



BD Medical
9450 South State Street
Sandy, Utah 84070
1.888.237.2762
www.bd.com/infusion